

# The GEOALIGN® System

A Bard Technology

## WHAT IS THE GEOALIGN® SYSTEM?

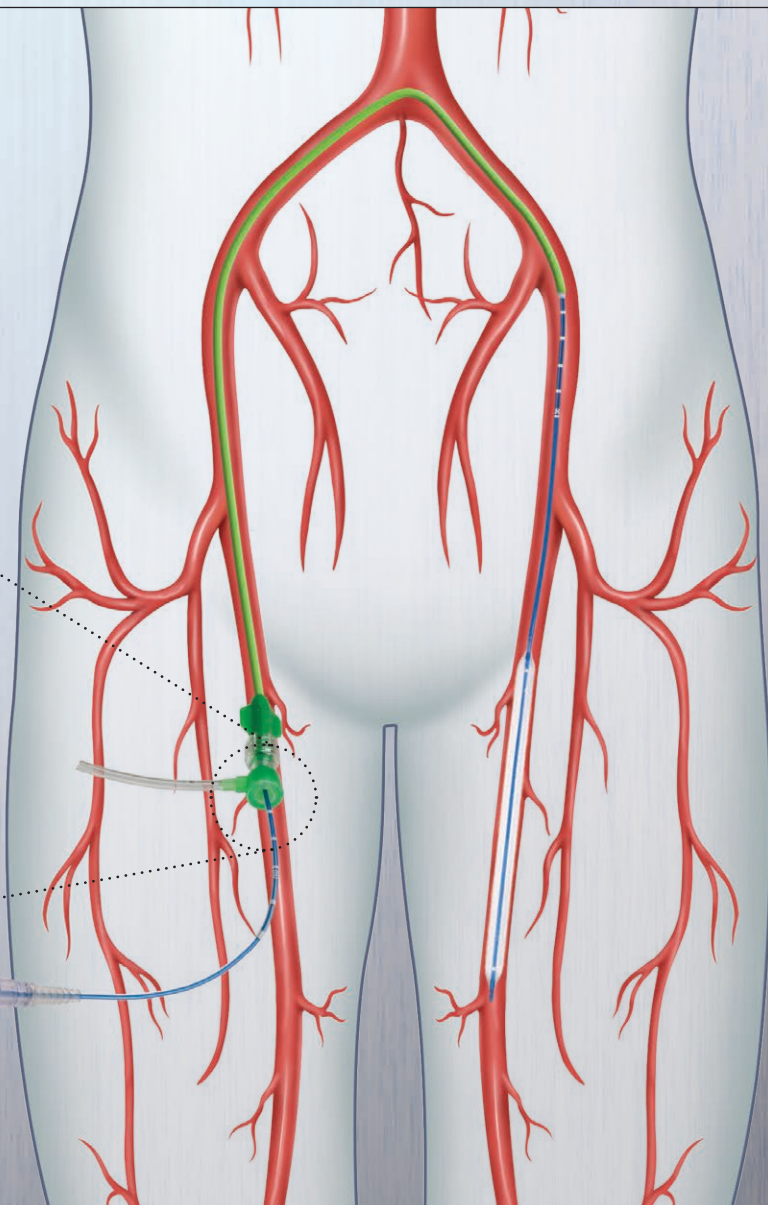
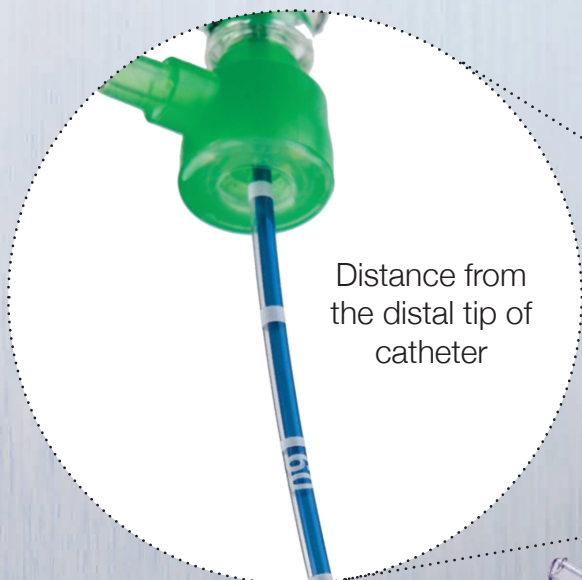
70

Distance from the distal tip of catheter

Marker bands denoted every 1 cm

## WHERE IS THE GEOALIGN® SYSTEM USED?

- Non-radiopaque **ruler** on the catheter shaft measured from the distal tip<sup>1</sup>
- Designed to facilitate **repeat catheter alignment at the lesion**<sup>2</sup>

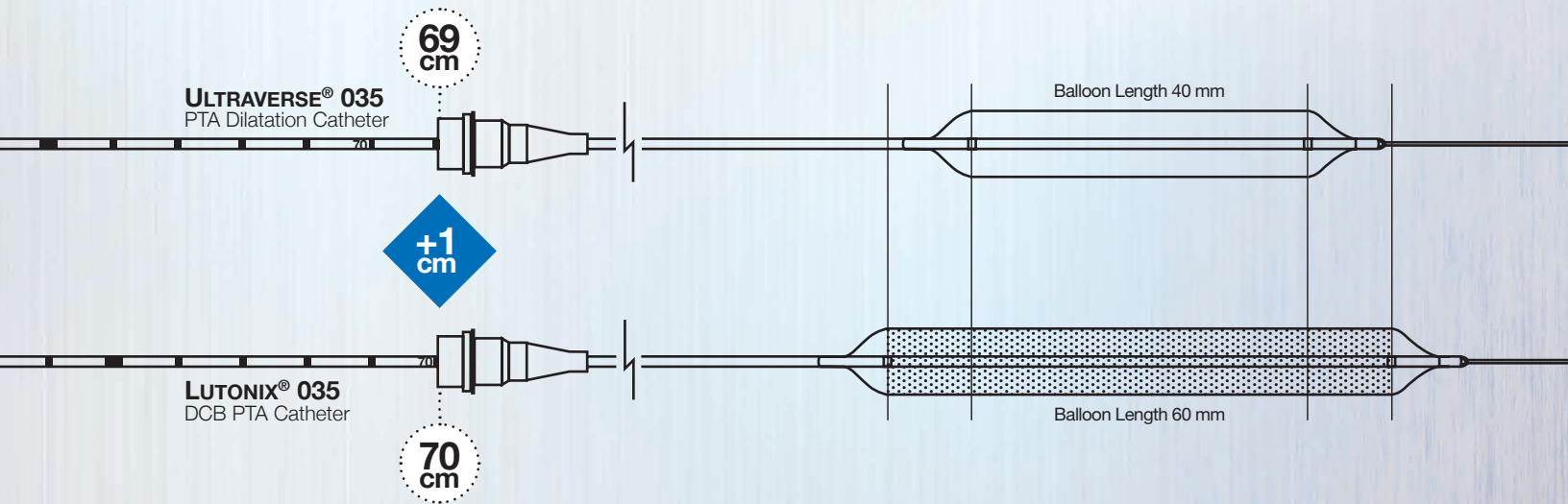


<sup>1</sup> The GEOALIGN® Marking System is not a replacement for fluoroscopy. When the catheter is exposed to the vascular system, the location of the balloon should be confirmed while under high quality fluoroscopic observation.

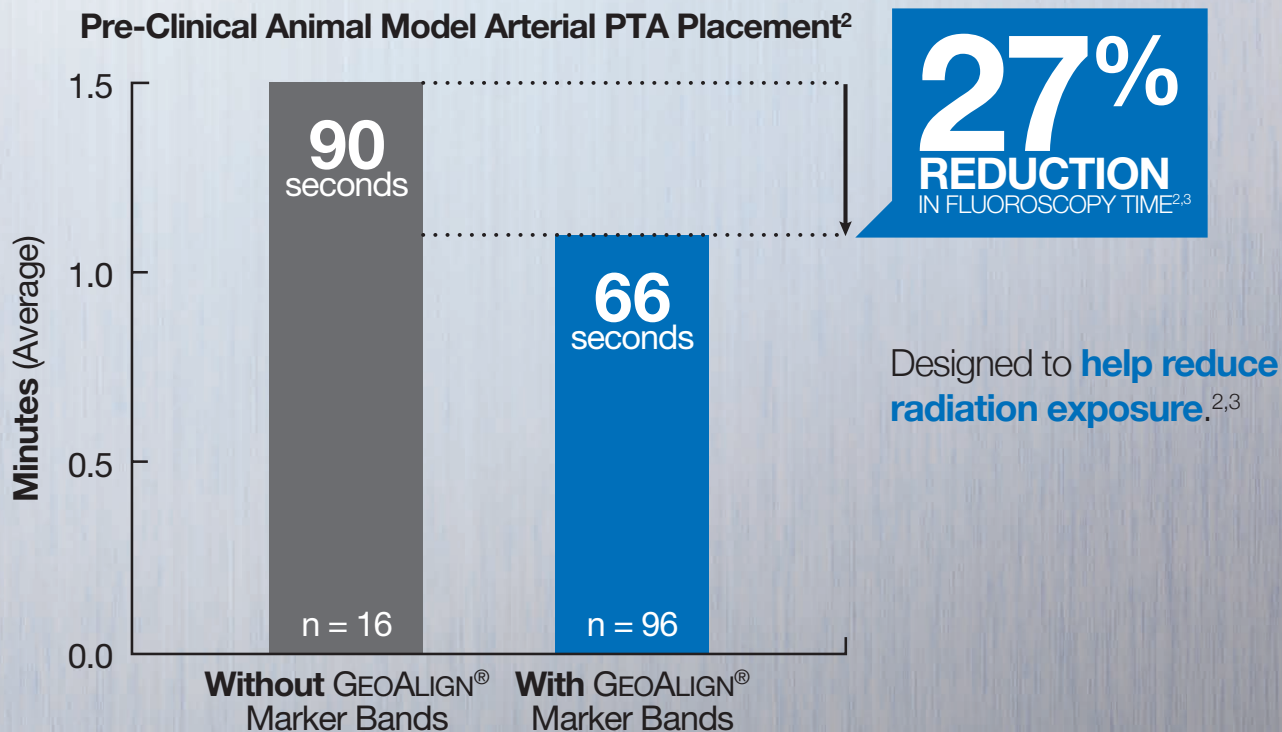
<sup>2</sup> Animal study (repeat PTA in swine artery) was performed by 3 physicians who tested the accuracy of LUTONIX® 035 DCB (no drug) alignment in relationship to ULTRAVERSE® 035 PTA Catheter treatment utilizing the GEOALIGN® Marking System (n=48, with an average placement accuracy of 2mm). Animal data on file at Bard. Animal test results may not be indicative of clinical performance. Different test methods may yield different results.

# HOW TO USE THE GEOALIGN® SYSTEM

The **GEOALIGN® Marking System** on the LUTONIX® 035 DCB is designed to **facilitate repeatable catheter alignment at the lesion**.<sup>1,2</sup>



## HOW CAN THE GEOALIGN® SYSTEM MAKE A DIFFERENCE?



<sup>1</sup> The GEOALIGN® Marking System is not a replacement for fluoroscopy. The LUTONIX® catheter should always be manipulated under fluoroscopic observation when in the body. Please consult product labels and instructions for use for indications, contraindications, hazards, additional warnings and precautions. RX Only.

<sup>2</sup> Animal study (repeat PTA in swine artery) was performed by 3 physicians who tested the accuracy of LUTONIX® 035 DCB (no drug) alignment in relationship to ULTRAVERSE® 035 PTA Catheter treatment utilizing the GEOALIGN® Marking System (n=48, with an average placement accuracy of 2mm). Animal data on file at Bard. Animal test results may not be indicative of clinical performance. Different test methods may yield different results.

<sup>3</sup> When the catheter is exposed to the vascular system, the location of the balloon should be confirmed while under high quality fluoroscopic observation.

Please consult product labels and instruction for use for indications, contraindications, hazards, warnings and precautions. <sup>Rx only</sup>  
 Bard, Advancing Lives and the Delivery of Health Care, and GeoAlign, Lutonix, and Ultraverse are trademarks and/or registered trademarks of C. R. Bard, Inc. or an affiliate.  
 Copyright © 2016, C. R. Bard, Inc. All Rights Reserved. Illustration by Mike Austin. Copyright © 2016. All Rights Reserved. BPV/BPAL/0816/0042

